

SIZE	A	B	C
4	4 1/2	48-120	60-120
6	6 5/8	48-120	60-120
8	8 5/8	48-120	60-120

Dimensions are in inches

ALL MATERIAL IS TYPE 304 STAINLESS STEEL
 SEE DRAWING TX003 FOR CIPS FEMALE COUPLER DETAILS.
 SEE DRAWINGS TX001 AND TX002 FOR GROOVE DIMENSIONS.

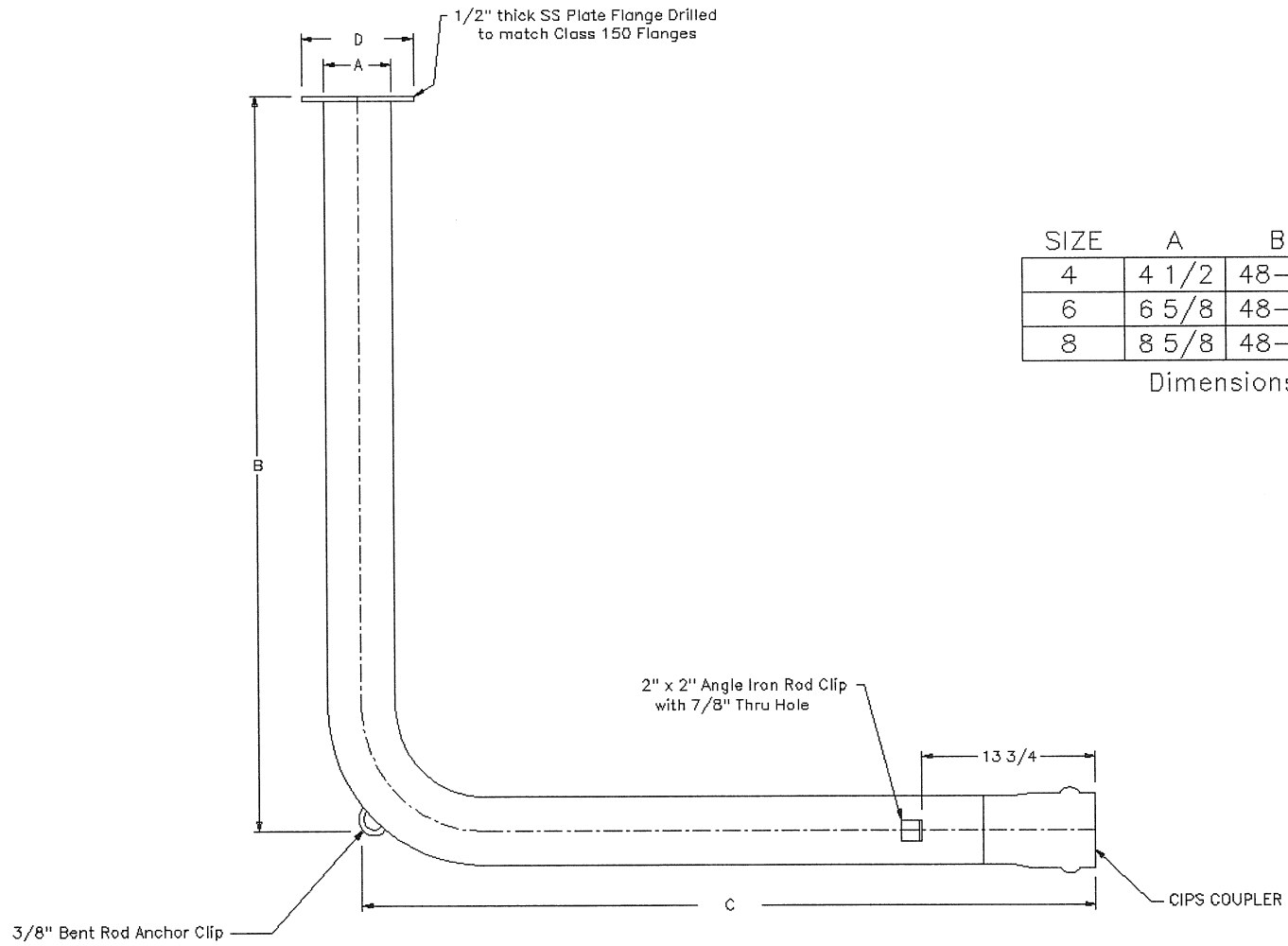
TEXAS MANUFACTURING
Company

WHITESBORO, TEXAS USA

PART NAME: **TEXLINE**
FLANGED SPIGOT ASSEMBLY

DATE: 11/27/07
 REV. _____

1075FSS DRAWING NO.	0 REV.
------------------------	-----------



SIZE	A	B	C	D
4	4 1/2	48-120	60-120	9
6	6 5/8	48-120	60-120	11
8	8 5/8	48-120	60-120	13 1/2

Dimensions are in inches

ALL MATERIAL IS TYPE 304 STAINLESS STEEL.
 SEE DRAWING TX003 FOR CIPS FEMALE COUPLER DETAILS.
 SEE DRAWINGS TX001 AND TX002 FOR GROOVE DIMENSIONS.

TEXAS MANUFACTURING
Company

WHITESBORO, TEXAS USA

PART NAME: **TEXLINE**
FLANGED SPIGOT ASSEMBLY

DATE: 11/27/07
 REV. _____

1075FFSS 0
 DRAWING NO. REV.